

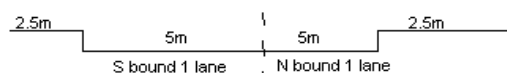
YEAR 2013

COVERAGE (B) STATION 4401

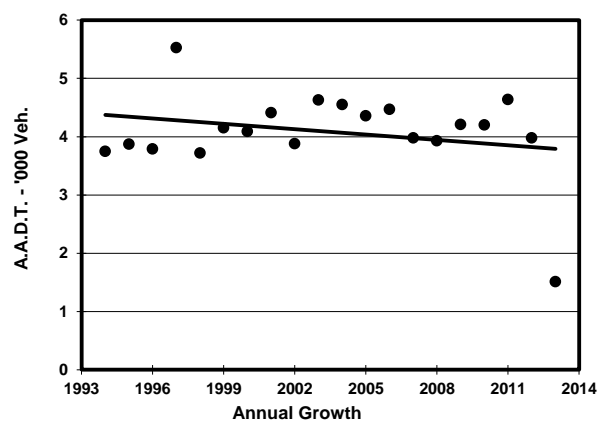
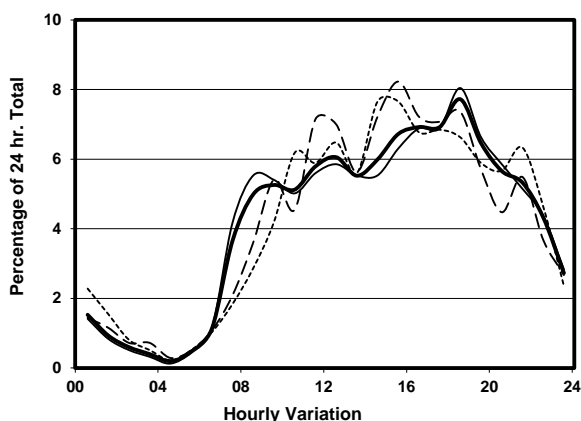
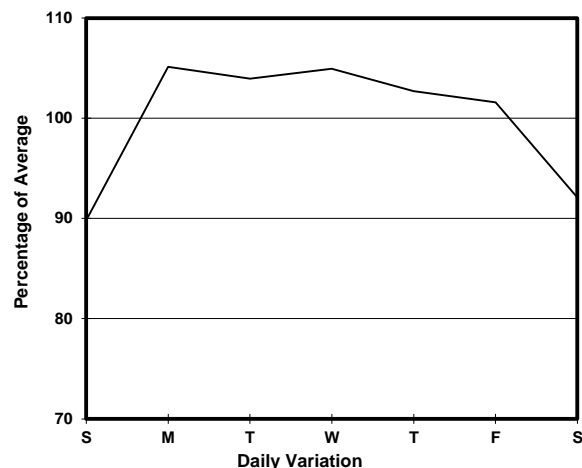
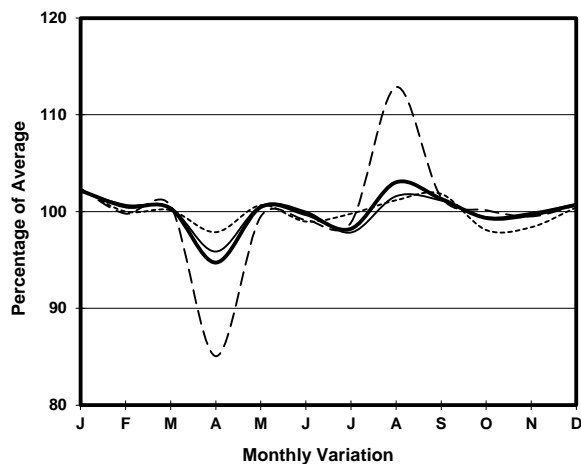
ROAD NETWORK MINOR

ROAD TYPE LOCAL DISTRIBUTOR

LINK HO MAN TIN ST (from WATERLOO RD to HO MAN TIN HILL RD)



1. TRAFFIC FLOW VARIATION AND GROWTH



2. TRAFFIC CHARACTERISTICS (BY DIRECTION)

Parameter	All - Day	Mon. - Fri.	Sat.	Sun.
SOUTH BOUND				
A.A.D.T.	790	810	800	690
R 12 / 24 - %	70.7	70.1	75.6	68.3
R 16 / 24 - %	92.3	92.2	93.3	90.6
AM Peak Hour	0800-0900	0800-0900	0900-1000	0900-1000
One-way flow at AM peak hour	40	50	40	30
T - % (AM)	-	2.3	-	-
PM Peak Hour	1800-1900	1800-1900	1800-1900	1800-1900
One-way flow at PM peak hour	60	70	60	50
T - % (PM)	-	-	-	-
Prop.of commercial vehicles - 16 hr.	-	3.6	-	-
NORTH BOUND				
A.A.D.T.	720	770	600	670
R 12 / 24 - %	70.7	71.5	68.5	69
R 16 / 24 - %	92.6	93.4	90.1	91.8
AM Peak Hour	0900-1000	0900-1000	0900-1000	0900-1000
One-way flow at AM peak hour	40	40	40	30
T - % (AM)	-	-	-	-
PM Peak Hour	1800-1900	1800-1900	1600-1700	1700-1800
One-way flow at PM peak hour	60	60	50	50
T - % (PM)	-	-	-	-
Prop.of commercial vehicles - 16 hr.	-	2	-	-

3. OTHER INFORMATION AND COMMENT

4. Vehicle classification and occupancy - Monday to Friday

Time		Class of vehicle									
		Motor Cycle	Private Car	Taxi	Private LB	PLB	Goods veh.		Non Fr. Bus	Fr. Bus	
							Light	M & H		SD	DD
0700-0800	Pro	0.0	36.0	16.0	8.0	4.0	12.0	4.0	20.0	0.0	0.0
	Ocp	0.0	1.2	1.3	9.0	7.0	1.3	1.0	10.4	0.0	0.0
0800-0900	Pro	1.6	77.4	6.5	6.5	3.2	3.2	0.0	1.6	0.0	0.0
	Ocp	1.0	1.4	1.3	3.8	2.0	2.0	0.0	9.0	0.0	0.0
0900-1000	Pro	1.9	61.1	18.5	0.0	3.7	14.8	0.0	0.0	0.0	0.0
	Ocp	1.0	1.6	1.8	0.0	7.0	2.0	0.0	0.0	0.0	0.0
1000-1100	Pro	0.0	51.2	17.1	2.4	2.4	22.0	2.4	2.4	0.0	0.0
	Ocp	0.0	1.3	1.7	1.0	8.0	1.7	2.0	2.0	0.0	0.0
1100-1200	Pro	1.9	50.0	30.8	1.9	1.9	11.5	1.9	0.0	0.0	0.0
	Ocp	1.0	1.5	1.8	4.0	16.0	1.7	1.0	0.0	0.0	0.0
1200-1300	Pro	0.0	54.2	18.8	8.3	2.1	6.3	2.1	8.3	0.0	0.0
	Ocp	0.0	1.3	1.1	6.3	10.0	1.7	2.0	11.5	0.0	0.0
1300-1400	Pro	0.0	56.1	29.3	0.0	2.4	12.2	0.0	0.0	0.0	0.0
	Ocp	0.0	1.5	1.4	0.0	8.0	1.6	0.0	0.0	0.0	0.0
1400-1500	Pro	4.9	56.1	31.7	0.0	2.4	4.9	0.0	0.0	0.0	0.0
	Ocp	1.0	1.5	1.4	0.0	9.0	1.0	0.0	0.0	0.0	0.0
1500-1600	Pro	5.1	48.7	20.5	0.0	2.6	10.3	2.6	10.3	0.0	0.0
	Ocp	1.0	1.6	1.5	0.0	11.0	1.5	3.0	8.3	0.0	0.0
1600-1700	Pro	0.0	61.4	27.1	1.4	0.0	5.7	1.4	2.9	0.0	0.0
	Ocp	0.0	1.6	1.5	7.0	0.0	1.8	2.0	12.0	0.0	0.0
1700-1800	Pro	0.0	66.1	17.9	5.4	1.8	7.1	0.0	1.8	0.0	0.0
	Ocp	0.0	1.5	1.5	3.0	13.0	1.5	0.0	4.0	0.0	0.0
1800-1900 Peak hour	Pro	1.1	64.4	27.8	0.0	1.1	5.6	0.0	0.0	0.0	0.0
	Ocp	1.0	1.5	1.6	0.0	9.0	1.8	0.0	0.0	0.0	0.0
1900-2000	Pro	1.4	73.6	22.2	0.0	1.4	1.4	0.0	0.0	0.0	0.0
	Ocp	1.0	1.4	1.9	0.0	14.0	1.0	0.0	0.0	0.0	0.0
2000-2100	Pro	3.4	48.3	41.4	0.0	3.4	3.4	0.0	0.0	0.0	0.0
	Ocp	2.0	1.5	1.3	0.0	9.0	2.0	0.0	0.0	0.0	0.0
2100-2200	Pro	0.0	69.6	28.3	0.0	2.2	0.0	0.0	0.0	0.0	0.0
	Ocp	0.0	1.7	1.7	0.0	1.0	0.0	0.0	0.0	0.0	0.0
2200-2300	Pro	0.0	65.7	31.4	0.0	2.9	0.0	0.0	0.0	0.0	0.0
	Ocp	0.0	1.5	1.9	0.0	4.0	0.0	0.0	0.0	0.0	0.0
16 hours	Pro	1.2	60.9	23.6	2.0	2.1	7.1	0.8	2.2	0.0	0.0
	Ocp	1.1	1.5	1.6	4.9	8.1	1.7	1.8	9.4	0.0	0.0

Legend

Pro. Proportion of vehicles in % (Sum may not add up to 100% due to figure rounding)
Ocp. Average occupancy of vehicles
M&H Medium and Heavy